



*Luxury attuned with nature...*



Search Over...







### **Redefines luxury living attuned with nature.**

Life and nature are similar concepts because nature is the study of how life acts and interacts within the circle of existence. When we take the time to examine the beauty of the world around us, we are able to see parallels within our own lives. One who is attuned with nature is attuned with the practice of living. All of nature moves in a spiral as do our personal lives. It is important to spend time in nature because in this way we can become attuned to its wisdom.





Perspective View

A Block







## High-class Apartments... Unlimited Dreams Recognized

### Located in the greenest belt of Dehradun

Mussoorie Woods is well connected to the rest of the city just 6 km from Clock tower and 3 km from Pacific Mall, 4 km from Max Hospital and 5 km from Sahastradhara. It has close proximity to the IT Park and is within striking distance of reputed universities like DIT and IMS and only 5 minutes away from the main Sahastradhara Road. Mussoorie Woods is strategically located with a wide access road. The area has a health care center, commercial & shopping complexes, education facilities and much more in the near vicinity.

Uncover your oasis of tranquility. An address against a clear blue sky, “Devagra Mussoorie Woods” offers panoramic views of reserve forest surroundings. With options of 2, 3 & 4 bedroom apartments overlooking sprawling greens; you can feel the rhythm of the city here while being at peace with your inner self. The benefits of contemporary urban living against a backdrop of reserve forest, is at the soul of what “Mussoorie Woods” promises you – a luxury living attuned with nature.

*It's about enjoying lifestyle  
after all!*







Mussoorie Woods Apartments are designed to bring all the comforts and joy of a healthy living for Elite class. The designing, ambience & comfort are a class apart, which speaks about your unique style. The apartments are super deluxe luxury, which have been designed with utmost care for depicting a unique matchless life style which till now was a distant dream.

The kitchen at Mussoorie Woods is designed keeping your convenience in mind. The design and style ensures the best utility of storage space. Provision are pre-made for all necessary kitchen amenities like modular kitchen attachments, exhaust fan, water purifies and cooking ranges.



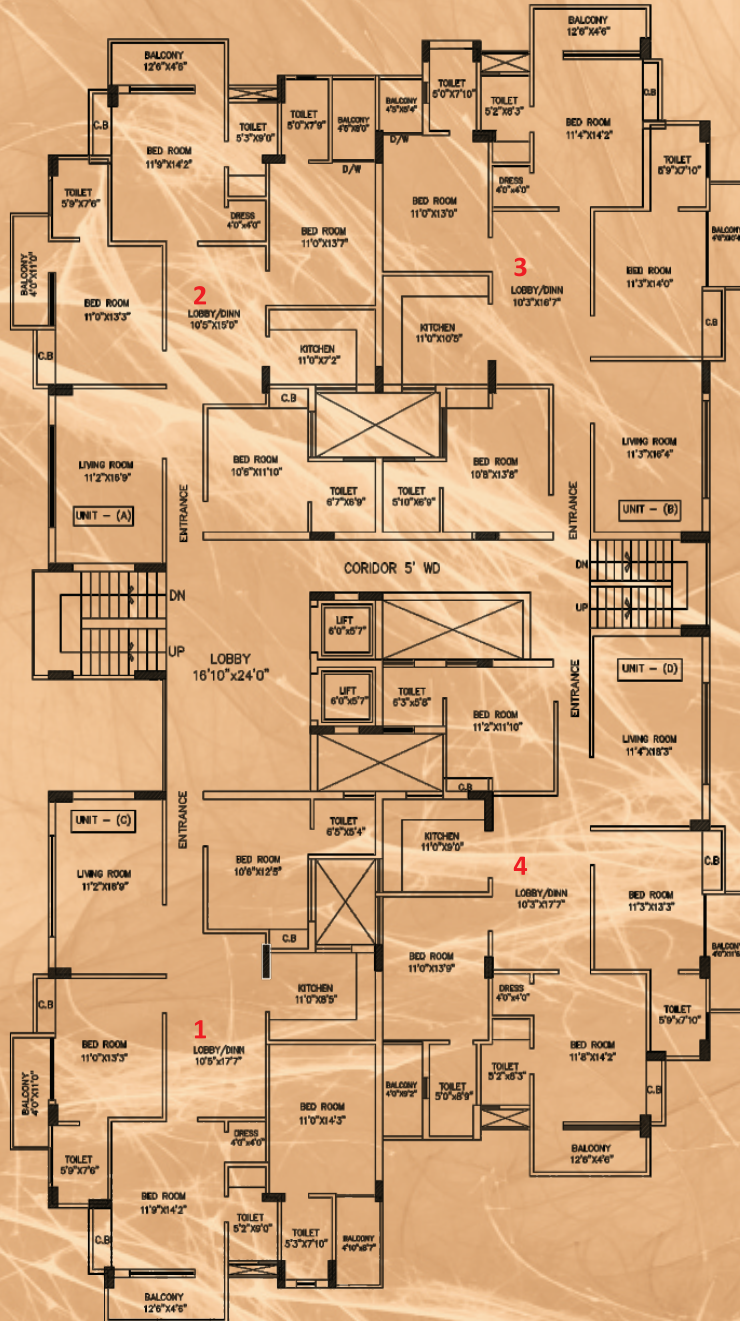


# A Block

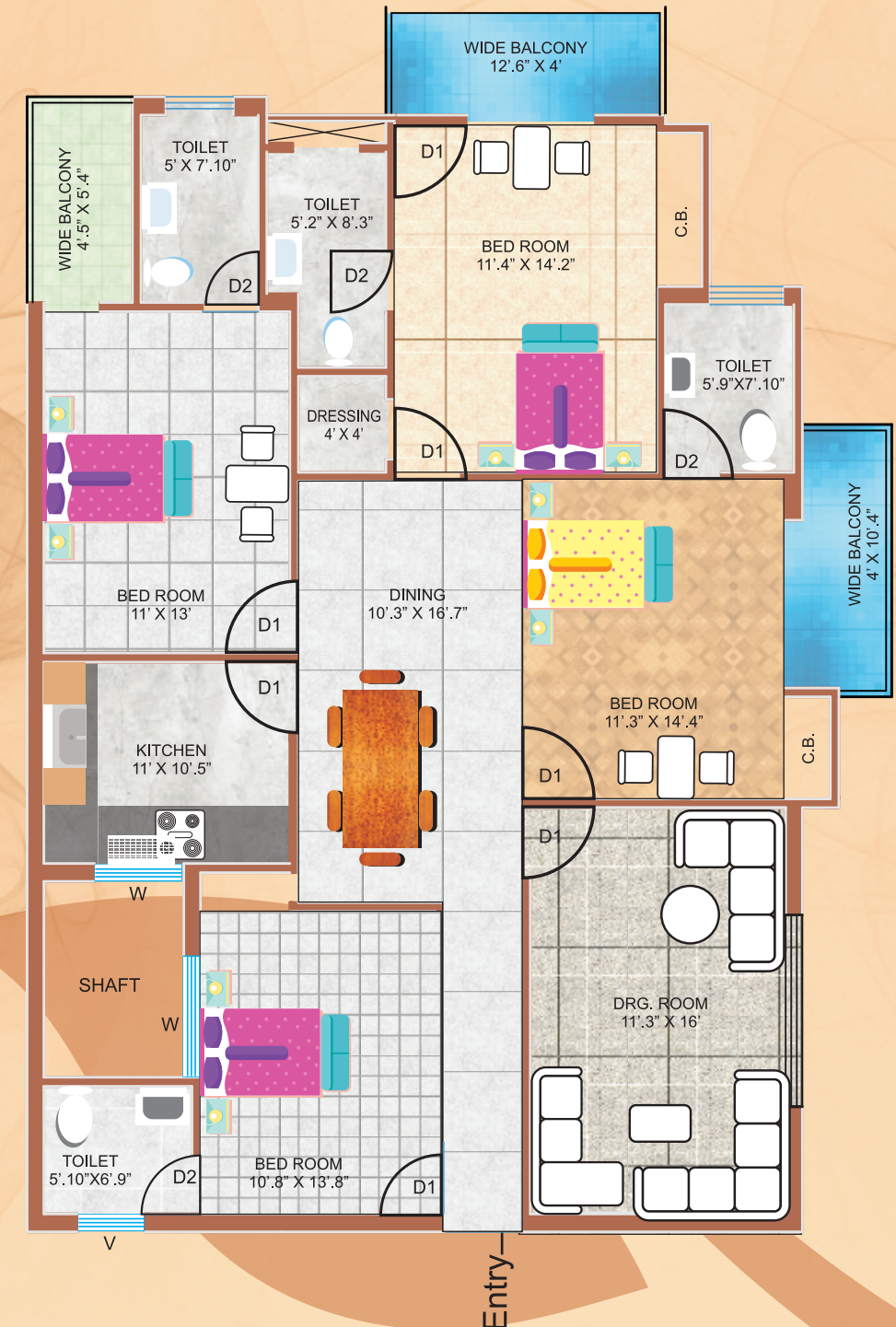
4 BHK - Fifth & Sixth Floor Unit Plan



Fifth & Sixth Floor Plan (4BHK)



**Total Area :**  
 Flat 1 - 2173 Sq. Ft.  
 Flat 2 - 2173 Sq. Ft.  
 Flat 3 - 2173 Sq. Ft.  
 Flat 4 - 2173 Sq. Ft.



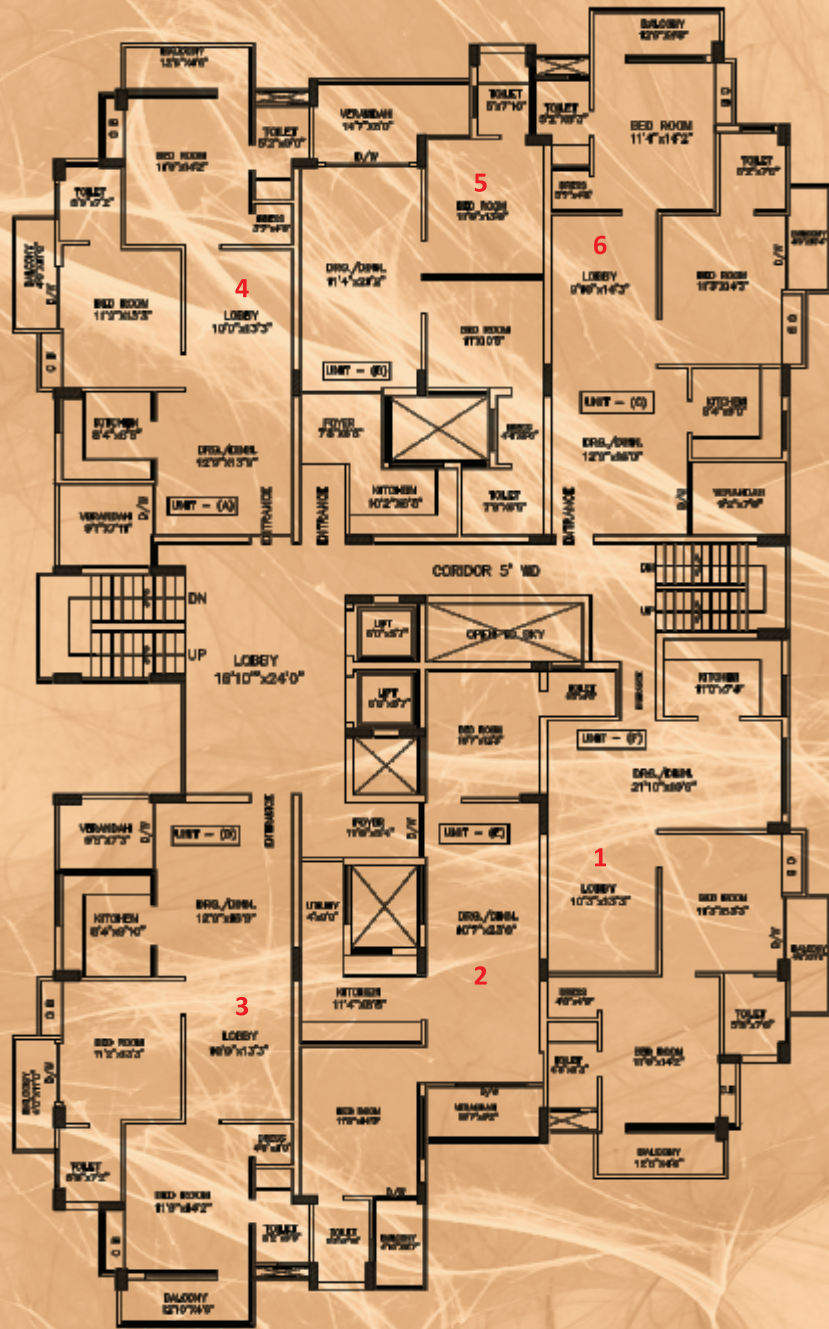


# A Block

2 BHK - Ground to Fourth Floor Unit Plan

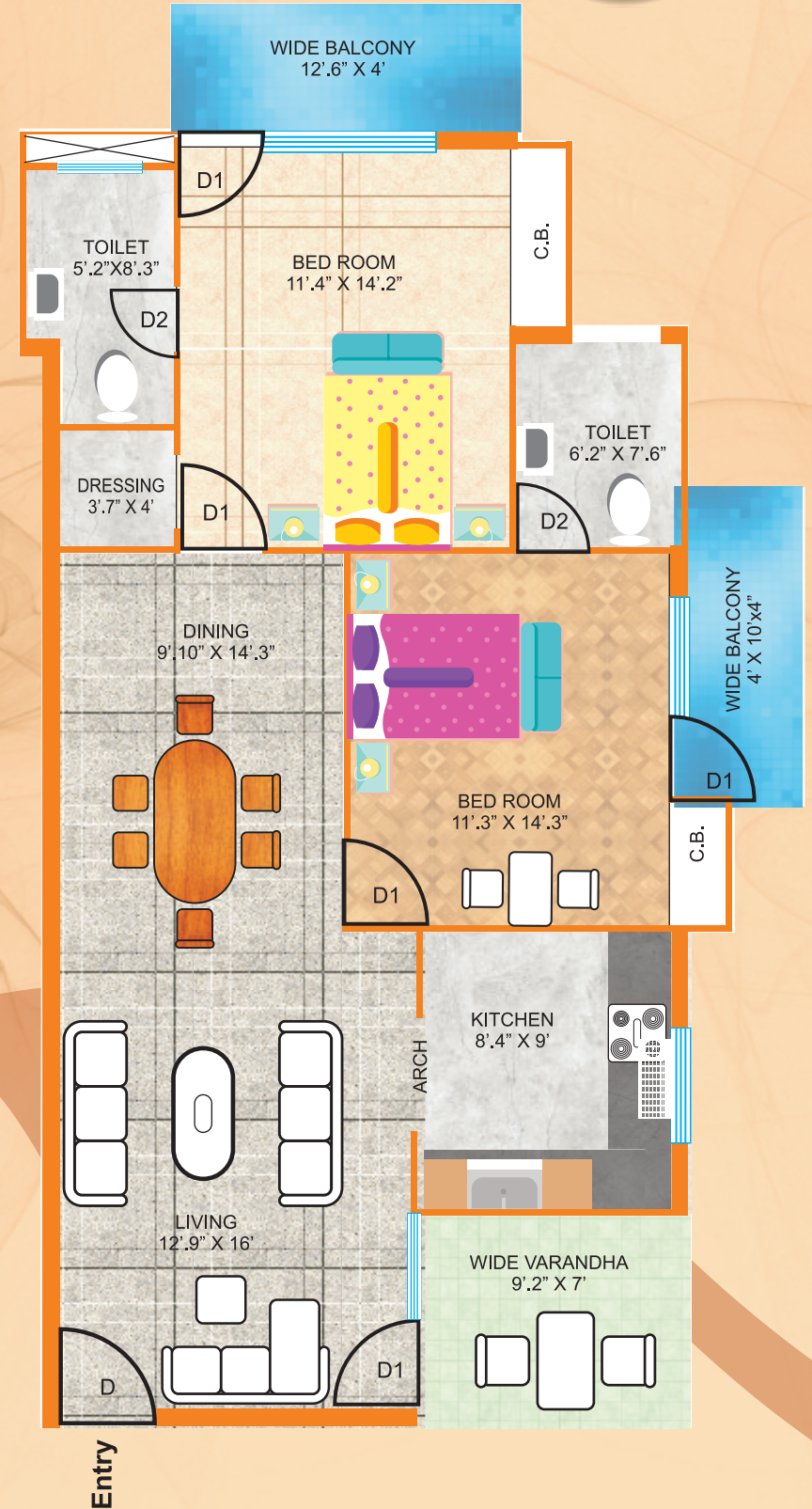


Ground to Fourth Floor Plan (2BHK)



**Total Area :**

- Flat 1 - 1513 Sq. Ft.
- Flat 2 - 1513 Sq. Ft.
- Flat 3 - 1513 Sq. Ft.
- Flat 4 - 1513 Sq. Ft.
- Flat 5 - 1513 Sq. Ft.
- Flat 6 - 1513 Sq. Ft.

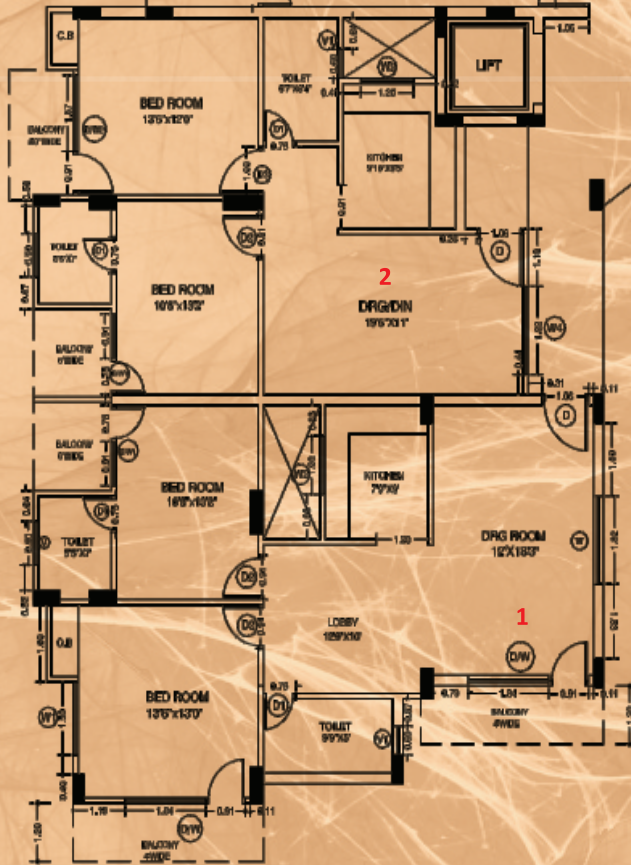
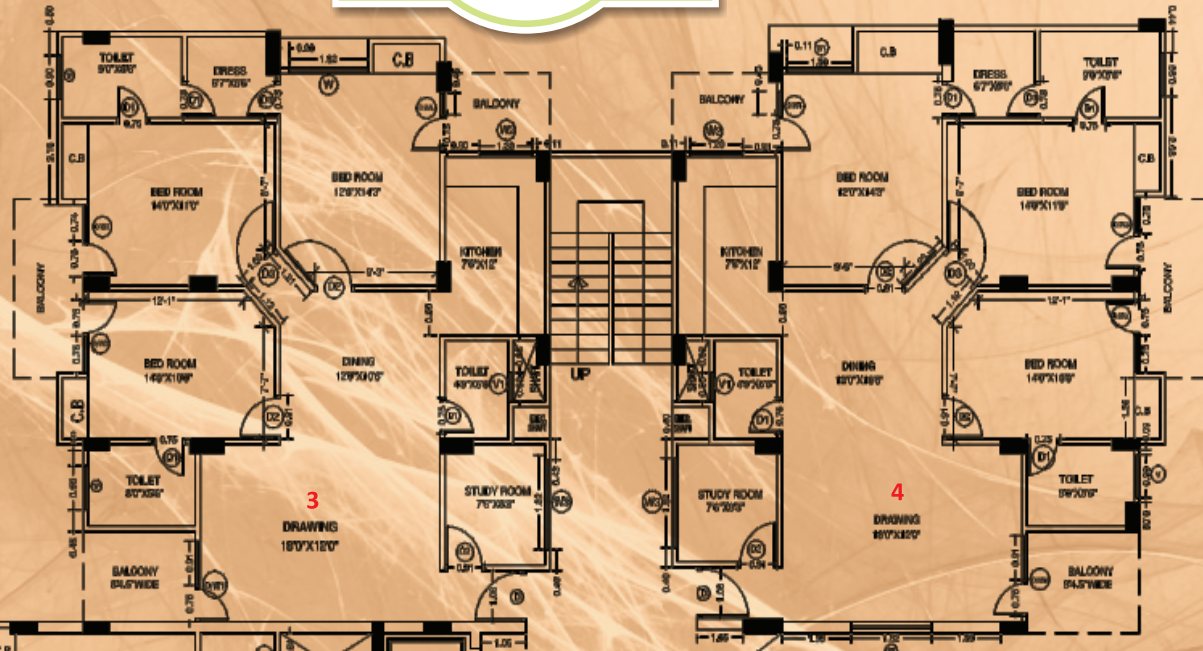




# B Block

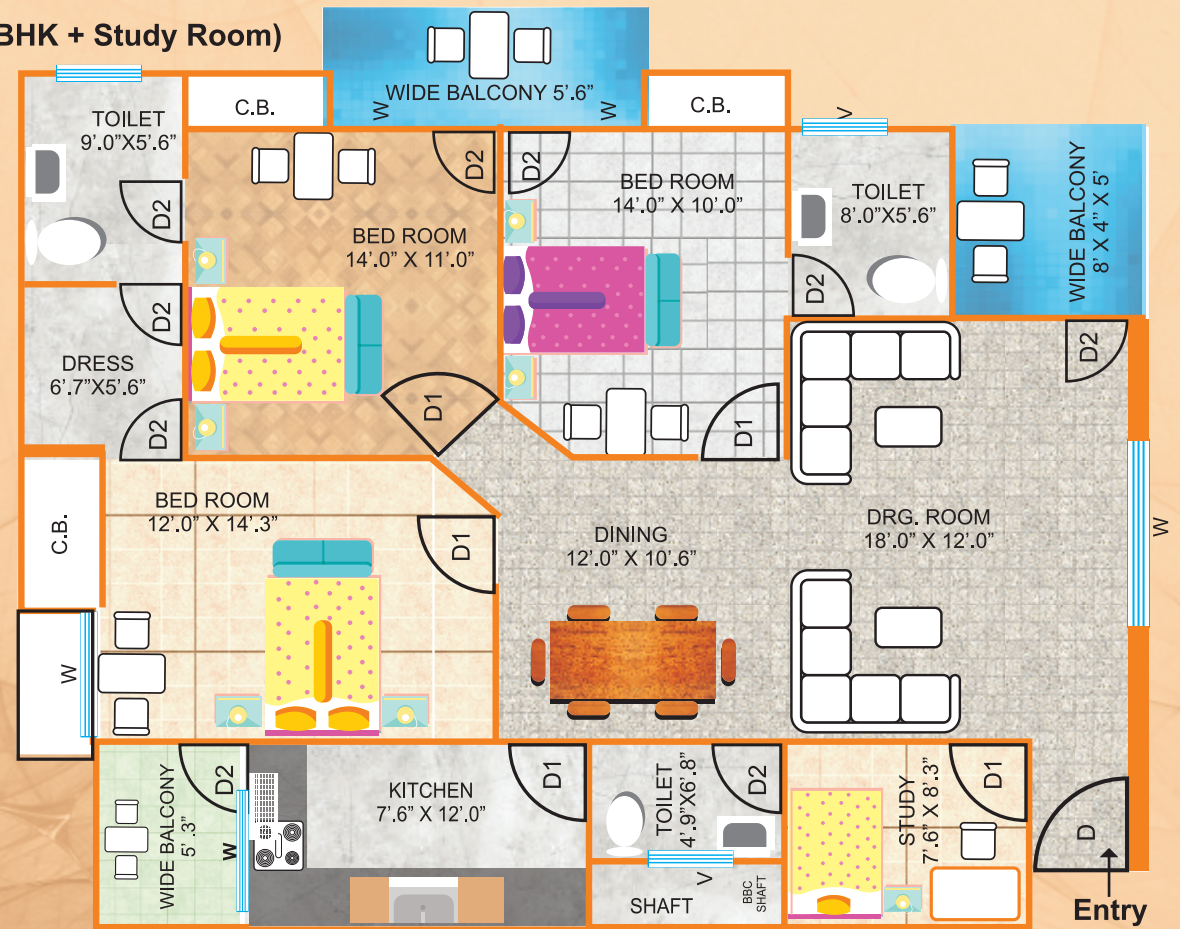


## Ground to Sixth Floor Plan (3BHK + Study Room)

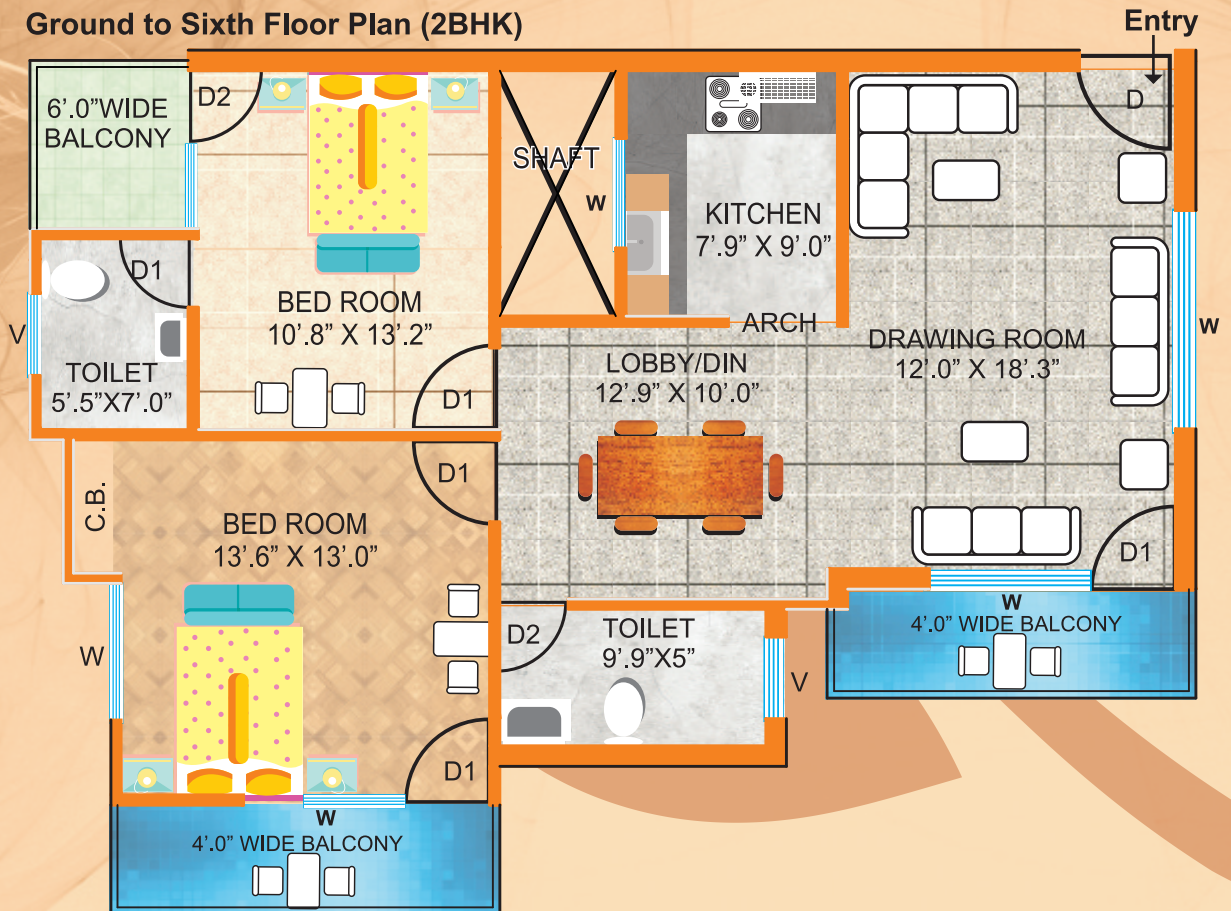


**Total Area :**  
 Flat 1 - 1467 Sq. Ft. (2 BHK)  
 Flat 2 - 1267 Sq. Ft. (2 BHK)  
 Flat 3 - 1941 Sq. Ft. (3+1 BHK)  
 Flat 4 - 1941 Sq. Ft. (3+1 BHK)

### B-Block Full Unit Plan (3BHK+Study Room) + (2BHK)



## Ground to Sixth Floor Plan (2BHK)





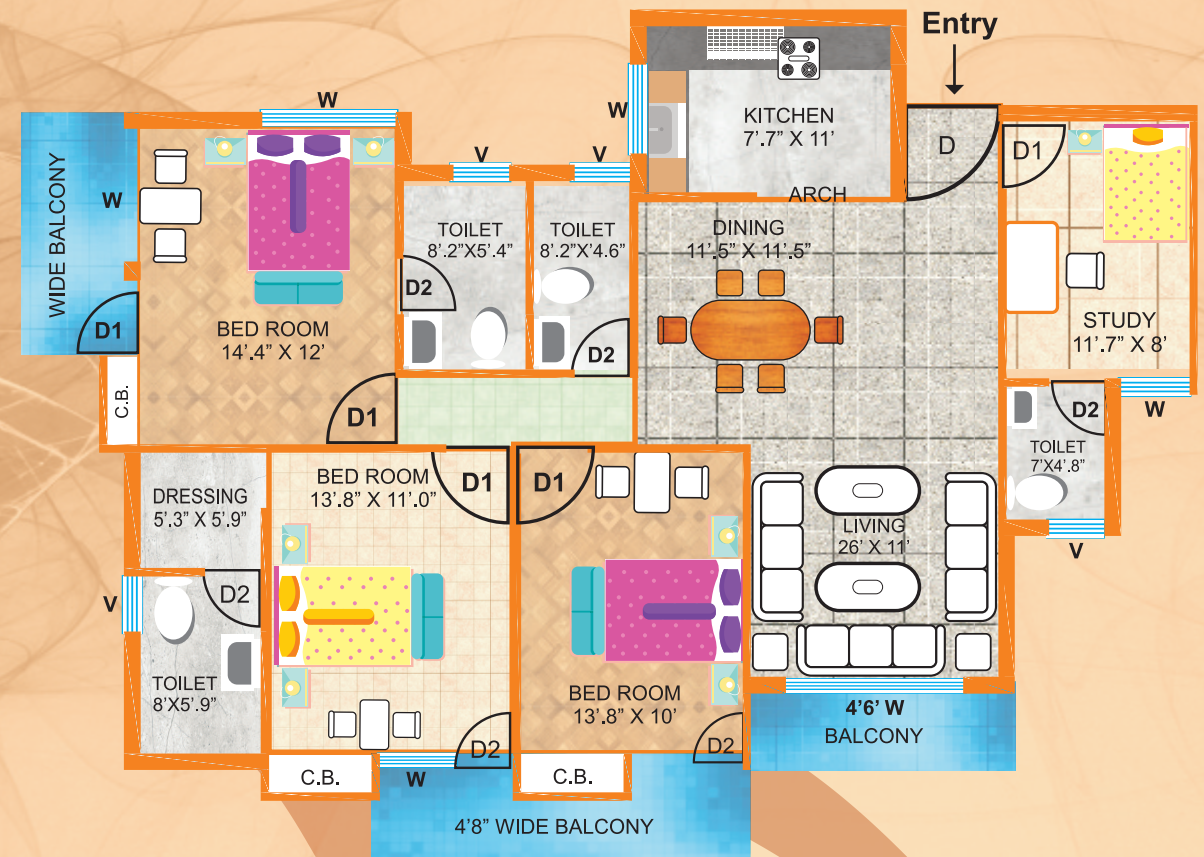
# C Block

Ground to Sixth Floor Unit Plan



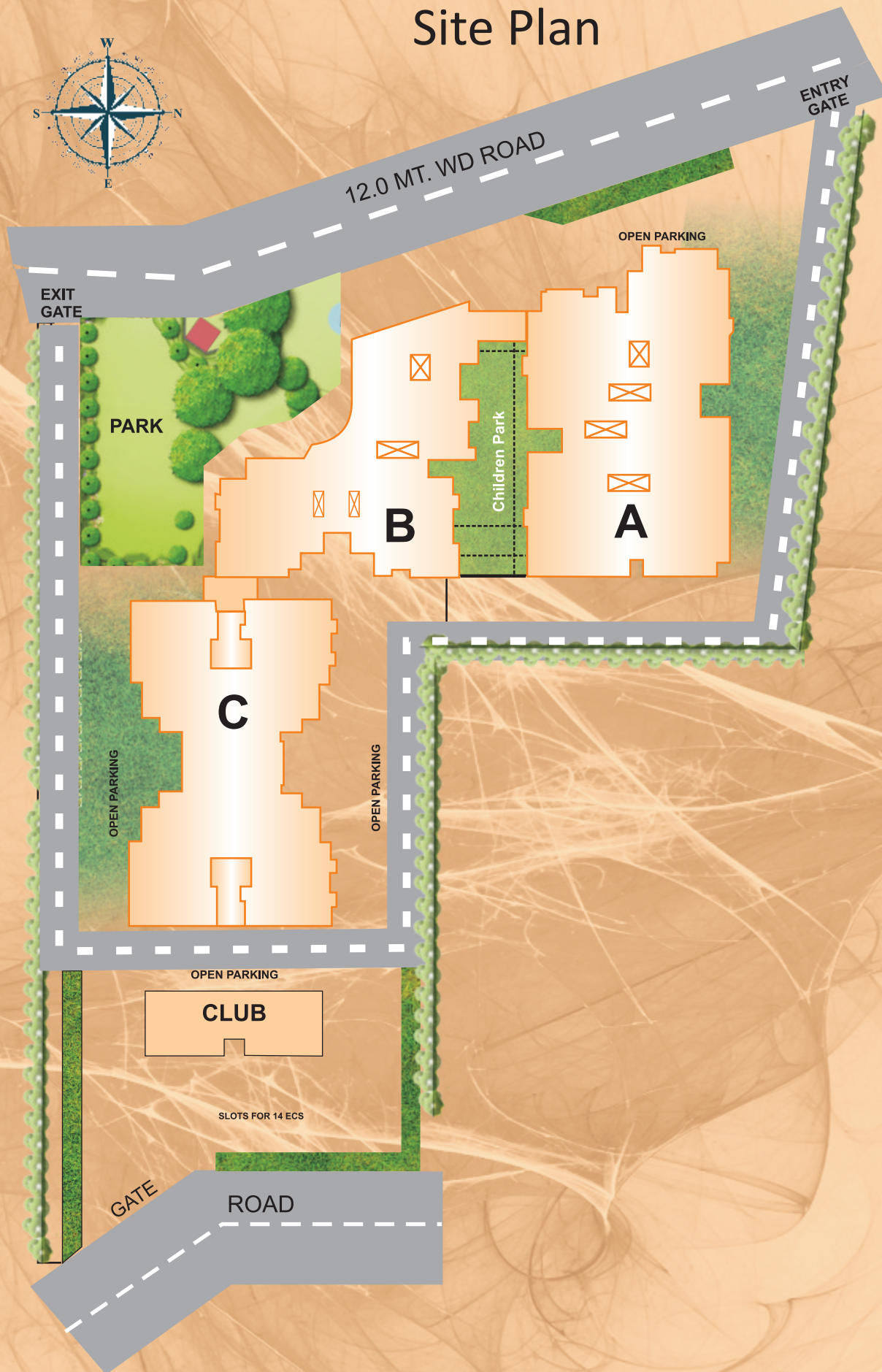
**Total Area :**  
**Each Flat**  
**2027 Sq. Ft. (3+1 BHK)**

**Ground to Sixth Floor Plan**  
**(3BHK+Servant Room)**

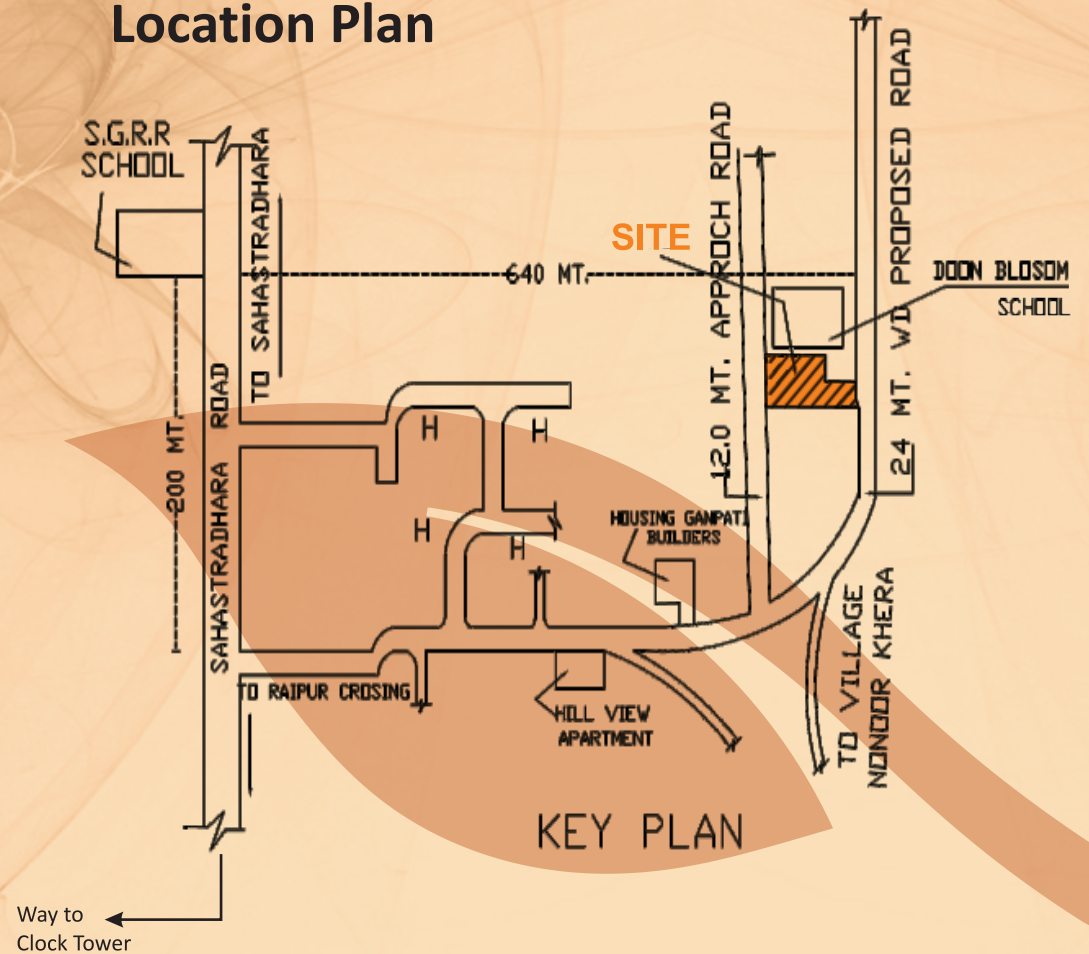




# Site Plan



# Location Plan





# Specification



## **STRUCTURE**

RCC framed structure considering stability in specified earth quake zone. First class brick work in 1:6 & 1:4 cement mortar for 9' thick & 4" thick brick wall respectively. Plasters in 1:4 & 1:3 cement mortar for internal & external surfaces respectively.

- Fe 500 steel used
- OPC cement used
- Design mix from IIT Roorkee
- Raft Foundation

## **FINISHES**

### **Surfaces**

- Internal Surfaces paint plastic washable paint.
- External Surfaces painted in weather coat

### **Flooring**

- Double charge vitrified tiles in covered area
- Anti skid tiles in semi open areas
- Anti skid ceramic tiles in toilets floors
- Granite counter in kitchen
- Udiapur Green on stairs & steps
- Kota Stone

### **Fixtures & Fittings**

- CP fittings from Jaquar or equivalent
- Sanitary from Cera/Hindware or equivalent
- Single bowl sink with drain board in kitchen
- CPVC pipe & fittings for plumbing & PVC pipes & fittings for drainage
- 500 Ltr. over head water storage tank, electrical fittings from Anchor/Crabtree or equivalent
- Electrical wires from Anchor/Havels or equivalent
- False ceiling in all apartment.

### **Wood Work**

- Doors & windows frames SAL wood & shutters in Sheesham wood & glass.

### **Metal Work**

- MS railings on stairs, balcony & terrace

### **External Areas**

- External lighting
- Plantation & Lawn Area
- Sitting Area
- SS railing in common areas
- Dedicated children's play area

### **Club**

- Restaurant
- Small Conference Hall
- Gymnasium with optimum equipments
- Pool Tables





**DEVAGRA BUILDERS PVT. LTD.**

Regd. Office : 103, Raj Plaza, Rajpur Road, Dehradun

Marketing Office : Mussoorie Woods Apartments,

Plot No. 144, Near Doon Blossom School,

Shastradhara Road, Dehradun

Mob. : 9997854710, 9897221220, 7500222229

E-mail : [info@devagrabuilders.in](mailto:info@devagrabuilders.in)

Website : [www.devagrabuilders.in](http://www.devagrabuilders.in)